

DENSO

Bar Code Handy Terminal
BHT-200B/BW-CE

Introducing the New Concept BHT with a
QVGA color large screen and Windows® CE. NET



Features

Progressive Advanced Scanning

At a range of up to 700mm (narrow bar width : 0.635mm) the advanced CCD scanning system enables high performance reading capability, even narrow bar labels are quickly read at this distance.

High Durability

- The CCD scan engine has no moving parts ensuring superior durability.
- Shock Resistant to withstand multiple drops from 1.2m onto concrete, and sealed against water and dust to IP54 international standard.

High Speed Processing

With DENSO's specially developed driver, scanned bar code information is quickly processed and shown on the display.

Microsoft Windows® CE.NET

The latest Microsoft eMbedded Operating System provides an open architecture for application development.

Development Tools

- Microsoft eMbedded Visual C ++4.0 (SP1 or later)
- Windows CE Version BHT-200
- Software Developer's Kit (SDK)

High-speed IEEE802.11b Wireless Communication

Standard radio frequency technology IEEE 802.11b enables 11Mbps high-speed wireless communication.

Grip model (BHT-280BW-CE)

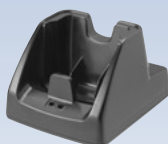
- Designed for various logistic industrial application.
- Additional battery in the grip enables long lasting operation.(Max:16hours Same operating conditions as the BHT 260.)

Accessories

- Hand Strap
- Touch Pen

Options (sold separately)

- Optical Communication Unit CU-201(RS-232C interface)
- Lithium-ion Battery Charger CH-201
- Lithium-ion Battery BT-20L



New Release Soon

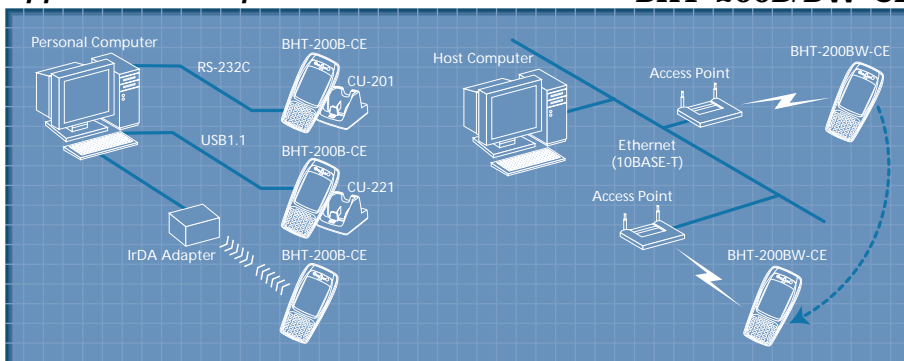
- 2D Imager
- Bluetooth I/F
- Unit CU-221 (USB1.1 interface)

- Specifications are subject to change without notice.
- Information in this catalog is current as of July 2003
- Microsoft®, Windows®, and the Windows logo are registered trademarks of Microsoft Corporation in the US and other countries.
- Intel® and XScale™ logo are registered trademarks of Intel Corporation in the US and other countries.

Manufacturer : DENSO WAVE INCORPORATED
Printed in Japan on 100% -recycled paper

Application Example

BHT-200B/BW-CE



Specifications

			BHT-260B-CE *3	BHT-260BW-CE *3
Controller	CPU		Intel® XScale™	
	Memory		RAM:32MB FlashROM:32MB (expandable CF slot)	
Display	Size		240×320 dots (QVGA)	
	Display Device		Liquid crystal dot matrix color display	
	Frontlight		YES (White LED Type Front light)	
Scanner	Method		Advanced scanning (CCD)	
	Scanning Area		Max. 700mm *1	
	Scanable Codes		EAN-13/-8, UPC-A/-E, UPC/EAN (with add-on), CODABAR(NW-7), CODE39, CODE93, Interleaved 2 of 5, CODE128 (EAN-128), STF, MSI	
	Resolution		0.15mm (PCS≧0.9)	
	Scanning Confirmation		2-color LED (red and blue) buzzer, vibrator	
Keypad	Number of Keys		30 keys (alphanumeric keyboard) +2 Trigger keys	
Communications	Wireless I/F	System	—	IEEE802.11b
		Frequency	—	2.4GHz Range
		Modulation	—	Direct Sequence Spectrum Spread
		Speed *2	—	11/5.5/2/1Mbps (automatic selection)
	Optical I/F	System	Infra-red (IrDA1.2 compliant)	
		Speed	115.2 kbps MAX.	
		Range	Approx. 0.15m	
	Cable I/F		USB 1.1 (Mini-B)	
Power Supply	Main Battery		Lithium-ion Battery	
	Operation hours *4		8 hours	
Auxiliary Functions			Clock, buzzer, vibrator, remaining battery display	
Weight			Approx. 360g	Approx. 380g
Environmental Requirements		Operating Temp.	-5℃~50℃	
		Water/Dust proof	IP54	
		Shock Resistance	1.2m (onto concrete) ×30 *3	

*1: Narrow bar width 0.635 mm or over, peripheral lighting over 500 lux.

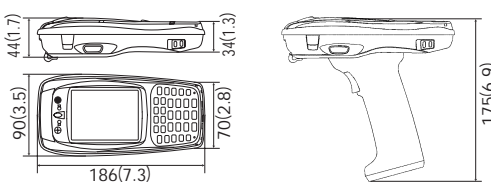
*2: Tested value, not guaranteed.

*3: The 26-key numeric keyboard is also available.

*4: When one operating cycle of wireless communication, scanning, screen display, stand-by = 1:1:1:20, and when using a new (fully-charged) battery, with wireless communication always on, and the buzzer, vibrator, and front light turned off.

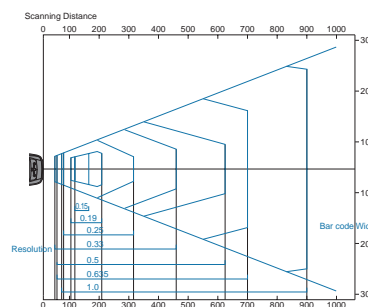
Dimensions

Unit:mm(inch)



Scan Range

Unit:mm



▲ AVOID EXPOSURE-LASER LIGHT IS EMITTED FROM THIS APERTURE ▲
CAUTION
LASER LIGHT-DO NOT STARE INTO BEAM
1mW MAXIMUM OUTPUT: 650nm LASER
CLASS II LASER PRODUCT
THIS DEVICE COMPLIES WITH 21 CFR CHAPTER I, SUBCHAPTER J.